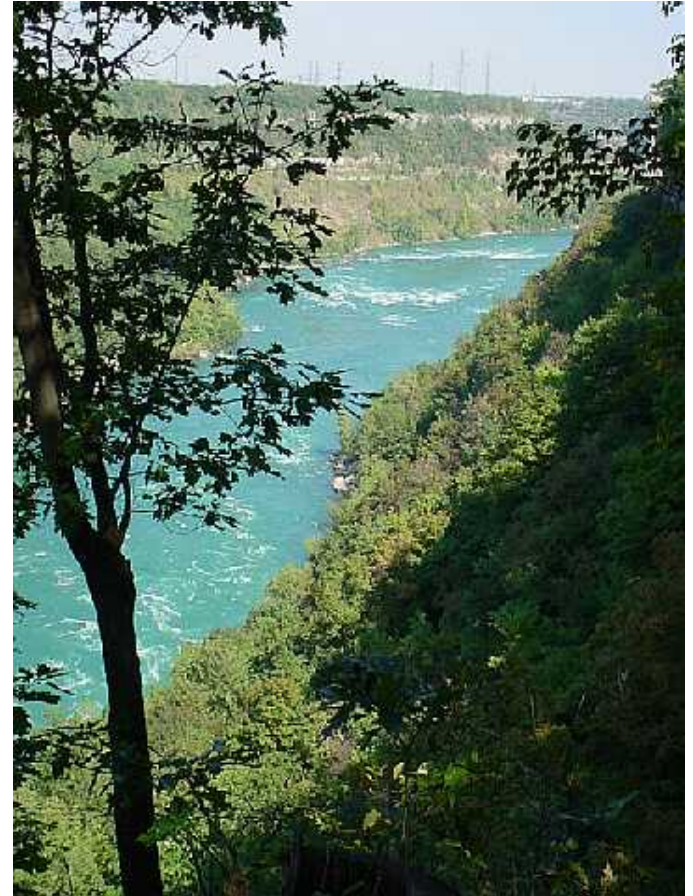


Regional Economic Growth Through Ecological Restoration of the Niagara Gorge Rim

Submitted to:
The Niagara River Greenway Commission

Submitted by:
Niagara Falls and the River Region Chapter of the
Wild Ones Native Plants, Natural Landscaping



Douglass R. Brackett, RLA
Robert A. Gallucci, PE

*Environmental Design & Research, Landscape
Architecture, Planning, Environmental Services,
Engineering and Surveying, P.C.*



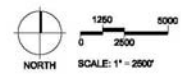
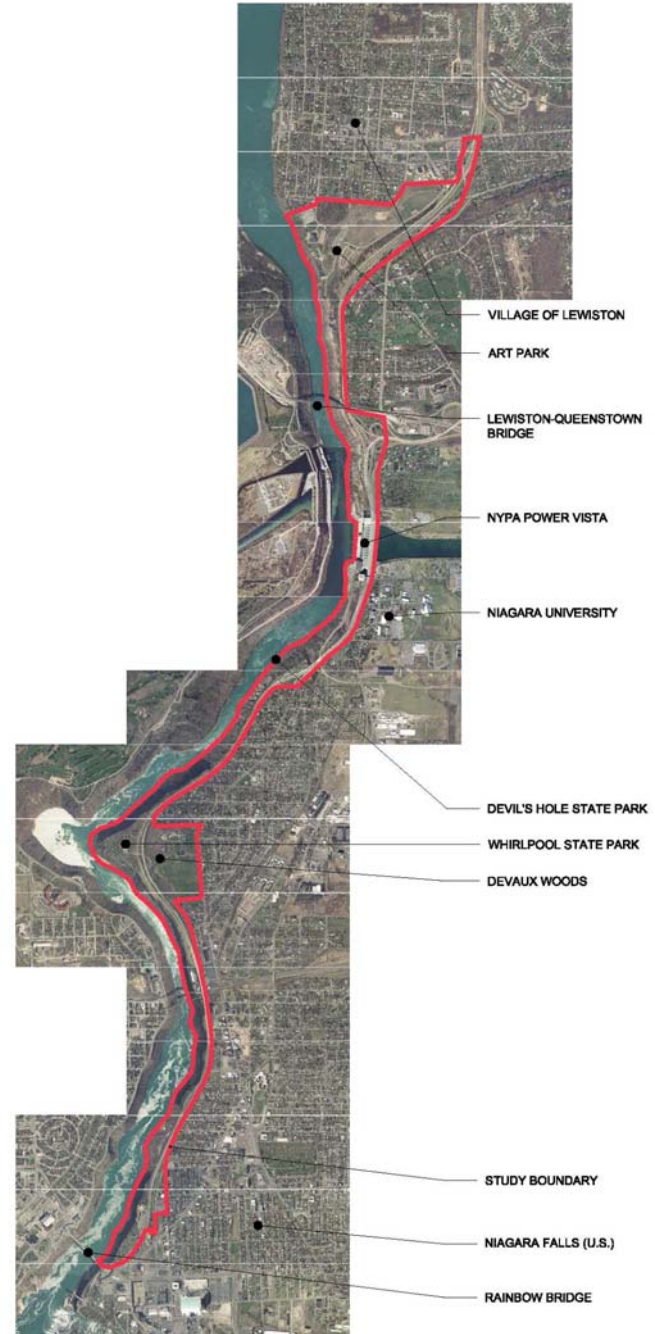
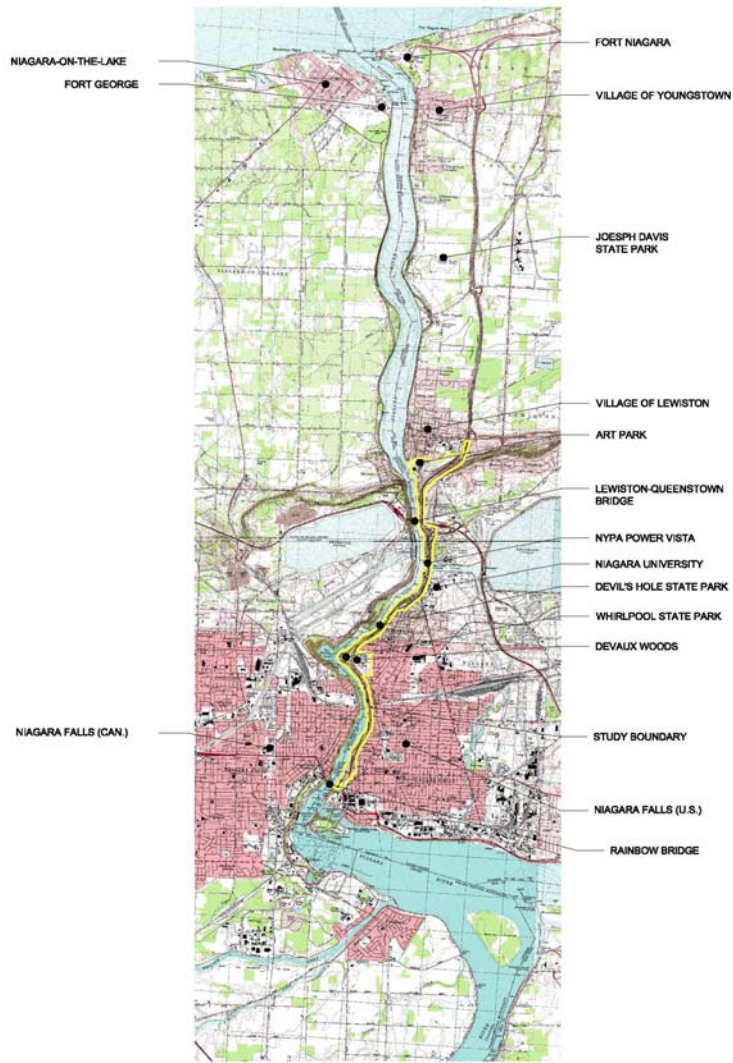
Agenda

1. **Review of the Project**
 - a) **Location**
 - b) **Purpose**
 - c) **Approach**
 - d) **Tasks**
 - e) **Budget, Schedule & Administration**
2. **Project Advancement of the Niagara Greenway Plan**
3. **Better Site Design Examples**
4. **Questions**



Project Location

Regional Context & Site Boundary



Project Purpose

For An Ecological Restoration Plan

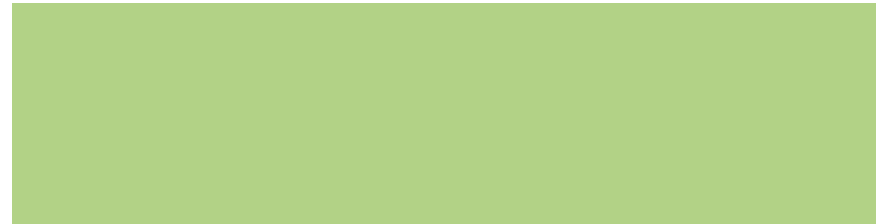
- 1. Identify Current Imbalances Within the Ecological and Man-made (Built) Environments**
- 2. Identify traffic patterns compatible with ecological restoration**
- 3. To Recommend Specific Projects to Reinvigorate Both the Ecological and Built Communities in This Area**
- 4. To create long-term ecological restoration and management guidelines that will identify economic, educational, cultural, heritage and ecotourism, and wildlife benefits**
- 5. To Provide a Unifying Tool for Bringing the Multiple Jurisdictions Together to Restore This Area**



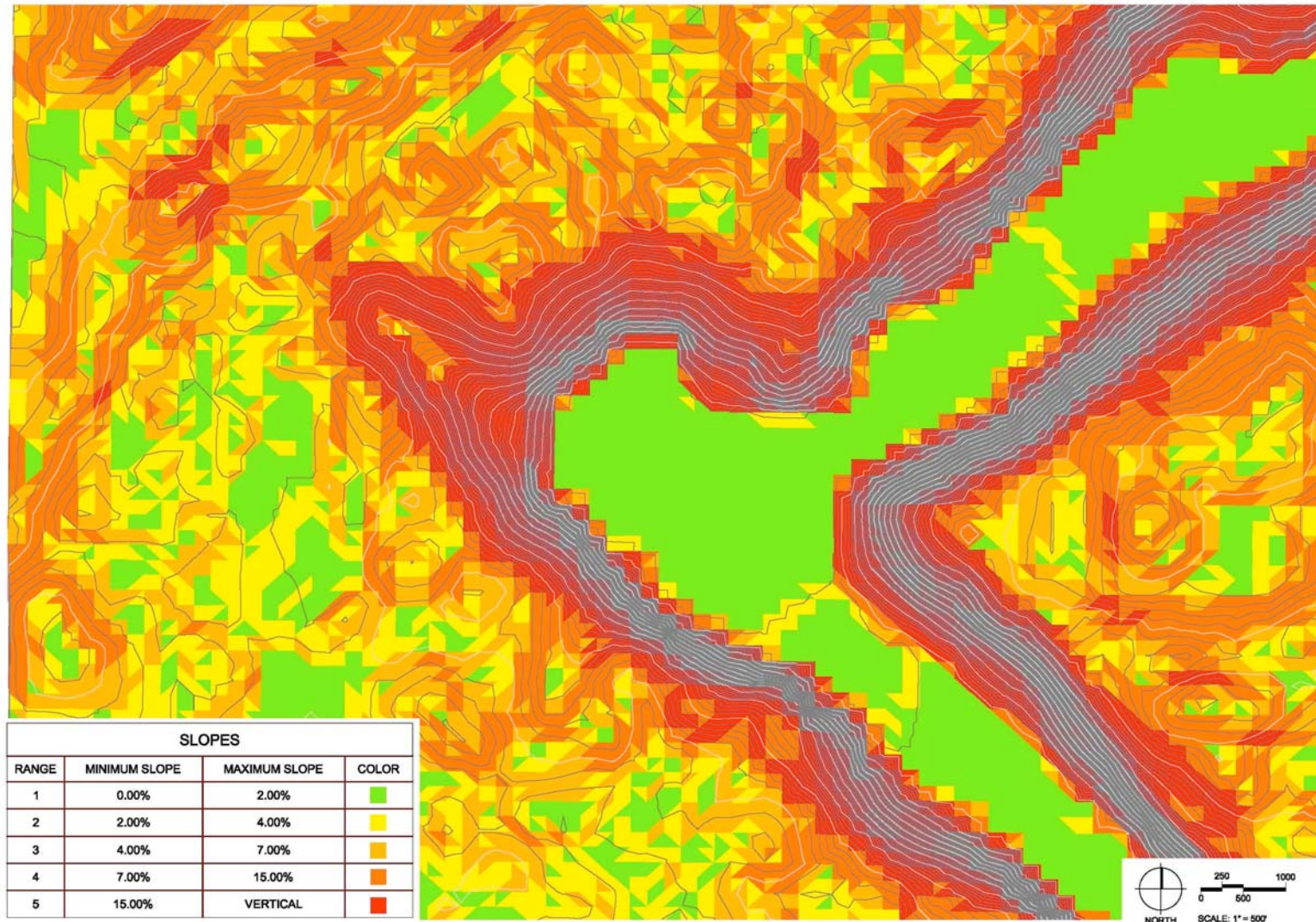
Project Approach

An Ecological Resource-Based Approach

- 1. Utilizes available data sources and analysis tools to provide an efficient and cost-effective assessment of natural systems and built resources**
- 2. Responds to natural resources in a economical and ecological sustainable manner for the long-term**
- 3. Uses landforms, plant communities, soils, and hydrology to establish a framework to guide sustainable community development**

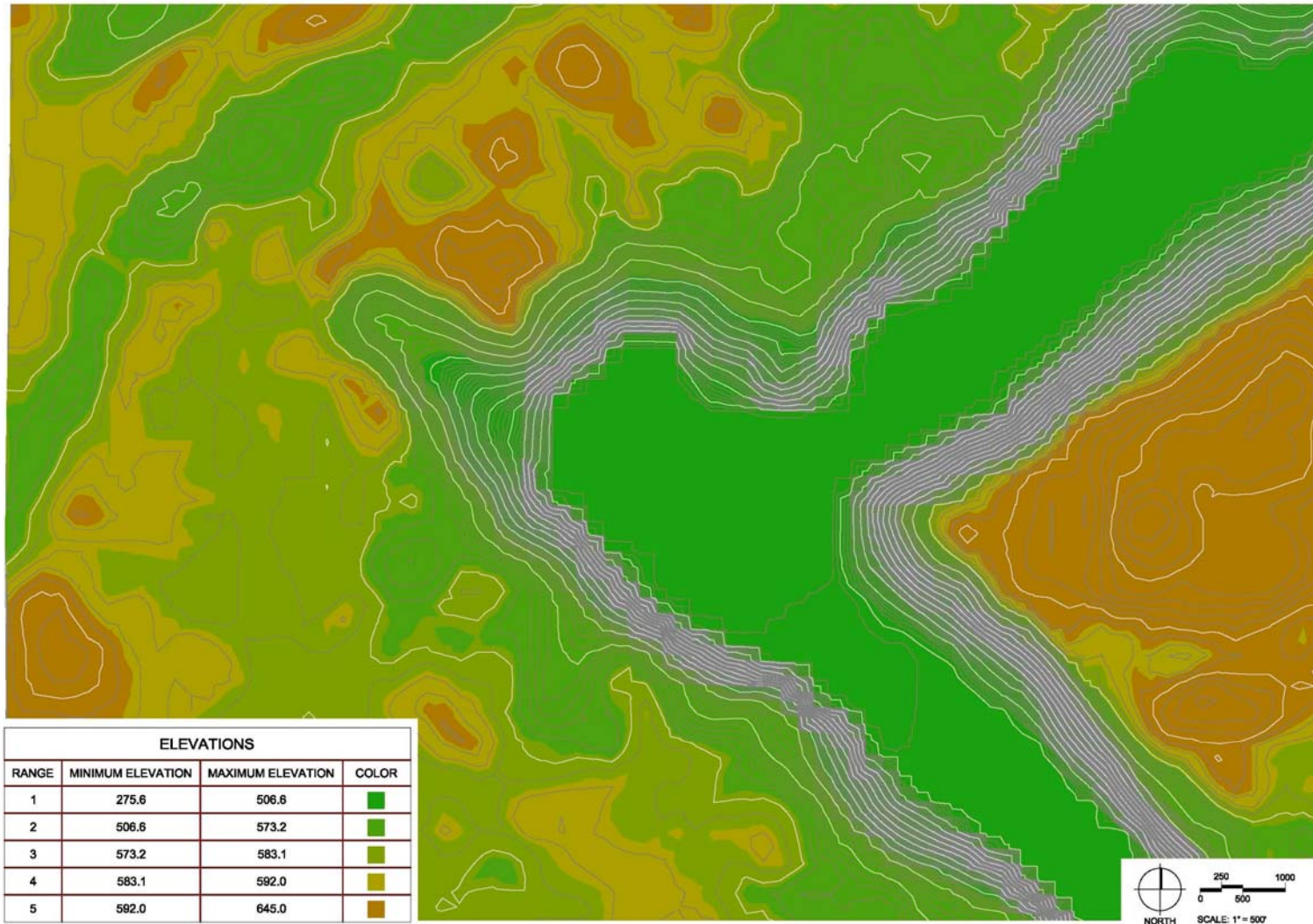


Ecological Resource-Based Approach – Slope Map



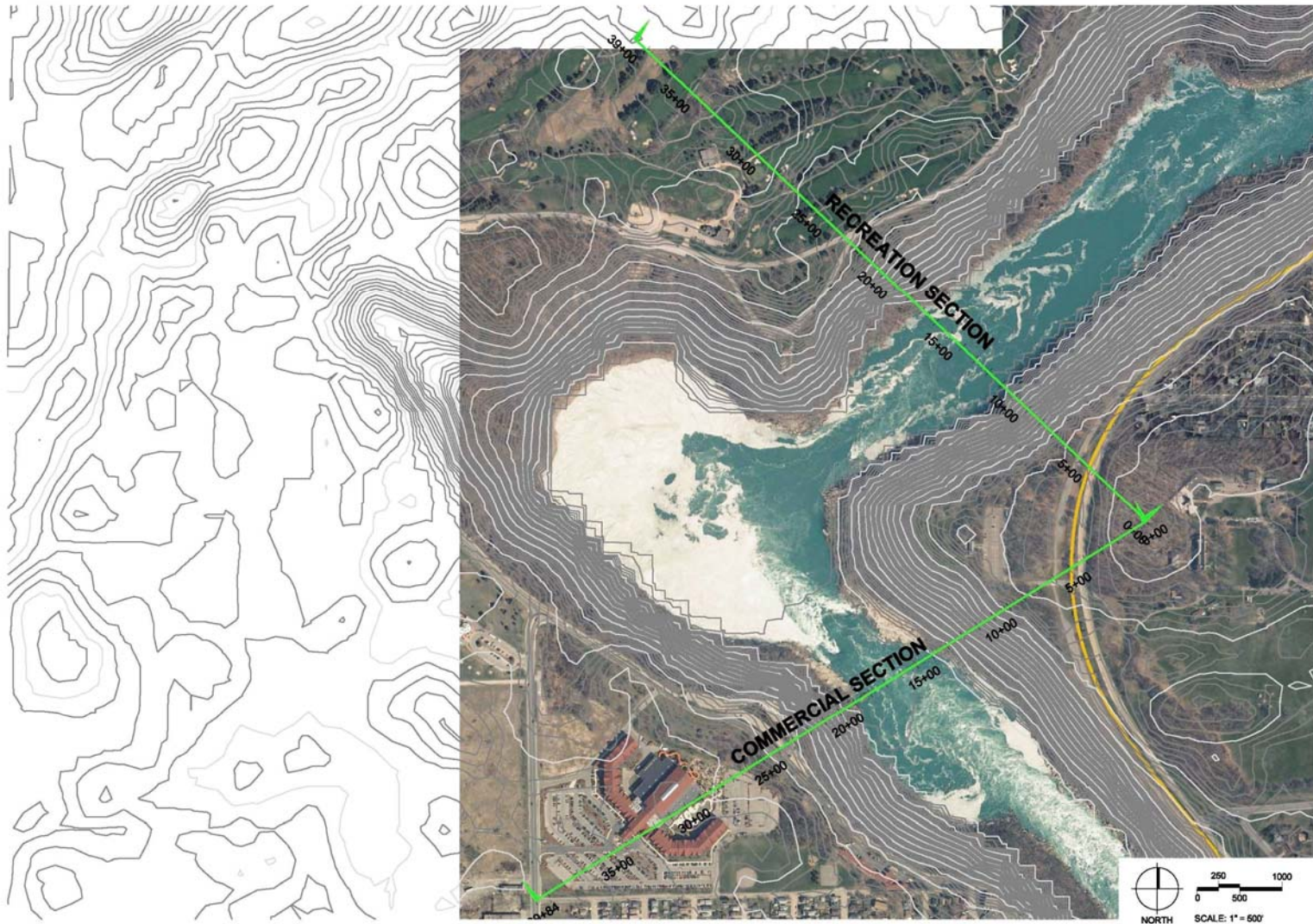
Use of GIS mapping, LIDAR topographic data and 3-D landform models to understand current and potential relationships between ecological resources and land development patterns

Ecological Resource-Based Approach – Elevation Map



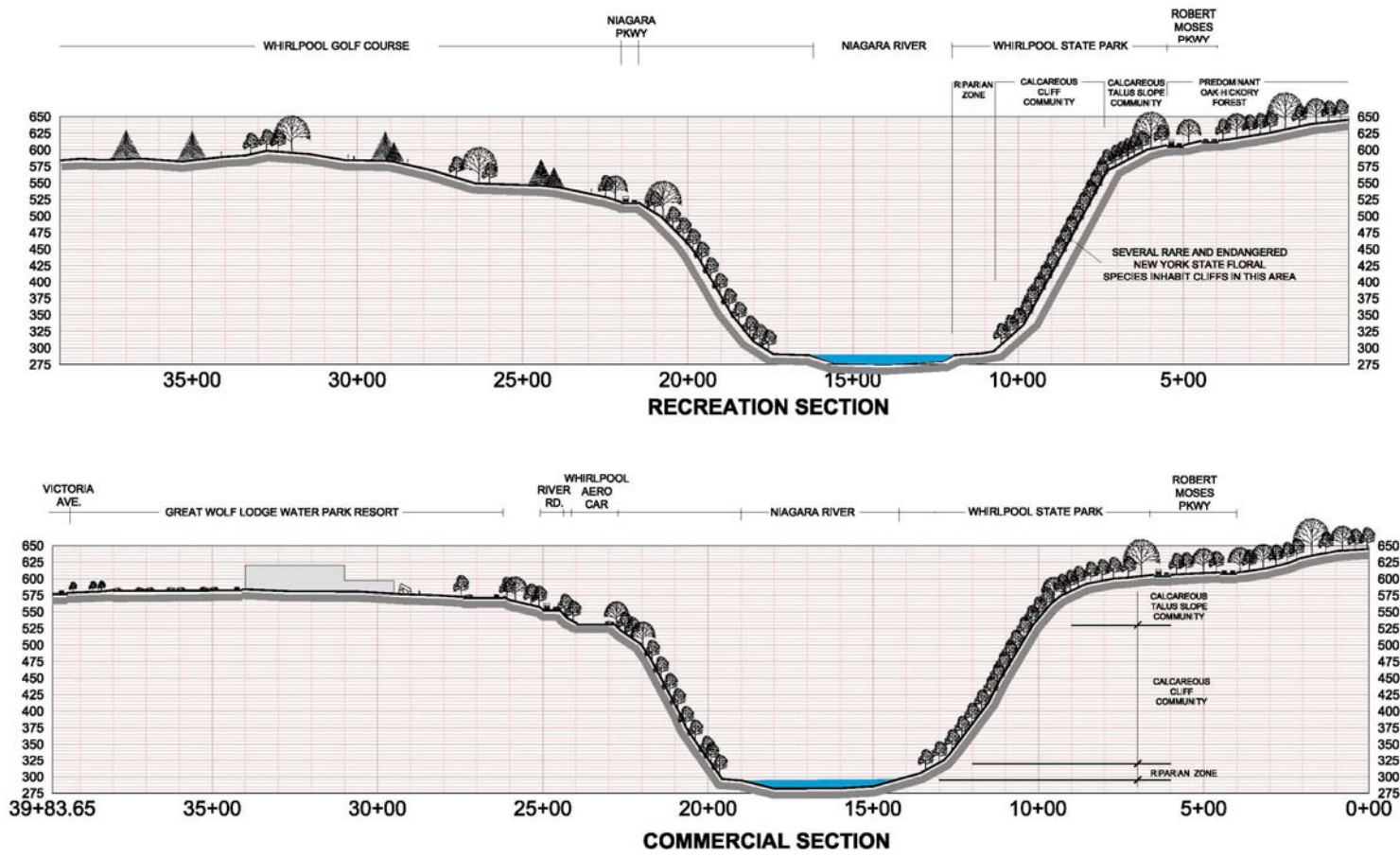
Use of GIS mapping, LIDAR topographic data and 3-D landform models to understand current and potential relationships between ecological resources and land development patterns

Ecological Resource-Based Approach – Gorge Section Location Map



Use of GIS mapping, LIDAR topographic data and 3-D landform models to understand current and potential relationships between ecological resources and land development patterns

Ecological Resource-Based Approach – Gorge Section



VERTICAL EXAGGERATION - 2 TO 1

Use of GIS mapping, LIDAR topographic data and 3-D landform models to understand current and potential relationships between ecological resources and land development patterns

Project Task 1

Gorge Inventory

1. **Historic & Ecological inventory- Analysis Using Existing Databases and GIS Mapping**

- New York State Natural Heritage Program data
- NYS Dept. of State Significant Coastal Fish and Wildlife Habitat data
- NYS Breeding Bird Atlas
- NYS Reptile and Amphibian Atlas data
- NYSDEC Significant Habitat files
- County and municipal planning and land use reports
- Niagara County Soil Survey
- USGS Topographic Maps
- Aerial Photography
- National Wetland Inventory and NYSDEC Freshwater Wetland Maps
- New York State Museum (Geologic Survey) Maps and Files
- Other Niagara Gorge Area Plans or Studies



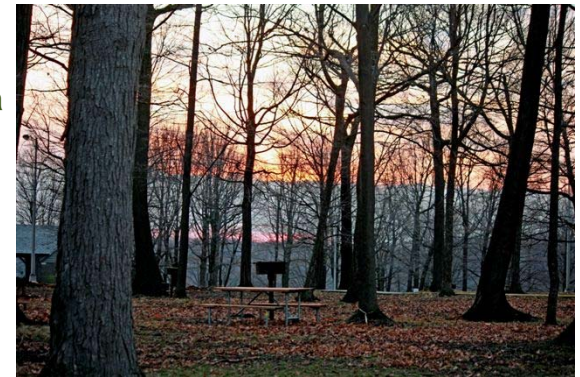
2. **On-Site Reconnaissance-level Field Review**

Project Task 2

Gorge Rim Inventory

1. **Historic & Ecological inventory- Analysis Using Existing Databases and GIS Mapping**

- New York State Natural Heritage Program data
- NYS Dept. of State Significant Coastal Fish and Wildlife Habitat data
- NYS Breeding Bird Atlas
- NYS Reptile and Amphibian Atlas data
- NYSDEC Significant Habitat files
- County and municipal planning and land use reports
- Niagara County Soil Survey
- USGS Topographic Maps
- Aerial Photography
- National Wetland Inventory and NYSDEC Freshwater Wetland Maps
- New York State Museum (Geologic Survey) Maps and Files
- Other Niagara Gorge Area Plans or Studies



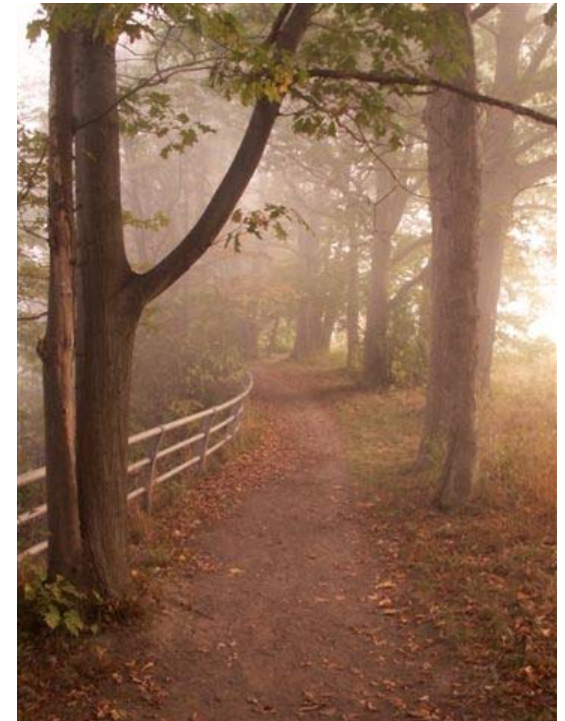
2. **Review of Historic Environmental Conditions Prior to Robert Moses Parkway**

3. **On-Site Reconnaissance-level Field Review**

Project Task 3

Restoration Plan

1. **Compare historical conditions to the current conditions**
2. **Provide recommendations to restore and maintain the diverse, sustainable ecological communities in the area currently occupied by Robert Moses Parkway.**
 - a) Representative of historical natural conditions
 - b) Large enough to support a full suite of native species
 - c) Significant enough to provide educational and tourism benefits
3. **Map locations for establishing different ecological communities**
4. **Outline realistic means of achieving restoration goals**



Project Task 4

Circulation Plan



1. **Balance the ecological community as a whole with usage potentials**
2. **Identify appropriate connections for access for people and vehicles**
3. **Create a pedestrian-friendly and humanly scaled riverfront**
4. **Analyze reconfiguring the transportation corridor to open up connection between the waterfront and the adjacent neighborhoods**

Project Task 5

Park Urban Interface Plan

1. **Enhancing connections to the neighborhoods in:**
 - a) City of Niagara Falls
 - b) Niagara University
 - c) Village and Town of Lewiston
2. **Review City of Niagara Falls' 2009 Comprehensive Plan neighborhood connection recommendations**
3. **Make new recommendations for connections to adjacent neighborhoods and land uses**



Project Task 6

Management Guidelines



1. **Develop ecological management guidelines for the built and natural environments**
2. **Acknowledge impacts from neighborhoods, tourists, traffic, and other man-made intrusions.**

Project Task 7

Implementation Plan

- 1. Suggest phasing and estimate cost for each phase or segment**

- 2. Identify specific projects to be pursued by different entities:**
 - a) New York State Office of Parks, Recreation, and Historic Preservation
 - b) New York Department of Transportation
 - c) Niagara County
 - d) City of Niagara Falls
 - e) Village and Town of Lewiston
 - f) New York Power Authority
 - g) Niagara University
 - h) Local neighborhood groups

Project Task 8

Graphic Plan and Simulations

1. **Graphic restoration plan**
2. **Prepare several (approx. six) three- dimensional visual simulations of key locations**



Project Task 9

Economic Impact



- 1. Identify regional tourism opportunities**
- 2. Predict value of economic revitalization to adjacent neighborhoods**
- 3. Review any foreseeable economic impacts resulting from the Restoration Plan recommendations**

Project Task 10

Video Presentation

1. Develop computer-generated fly-over based on the ultimate restoration build-out

- a) 2-3 minutes
- b) Incorporates graphics and simulations
- c) Promotes the Restoration Plan concepts



Project Budget, Schedule & Administration

2010

1. **Begin Restoration Plan Study in January 2010**
2. **\$140,000 Budget**
3. **Administered by Wild Ones Niagara**



Advancement of the Niagara River Greenway Plan

Examples of Supporting the Vision, Goals, Principles, and Criteria

1. **Identifies opportunities for public use and enjoyment**
2. **Creates high-quality, objective analysis for all projects within this corridor**
3. **Employs sustainable techniques for long-term care**
4. **Promotes neighborhood revitalization**
5. **Recommends physical and visual access to the Gorge area for young people, adults, seniors, and persons with special needs**
6. **Improves the health, vitality, and integrity of natural resources and wildlife habitats and the built environment**
7. **Promotes physical activity and community engagement**
8. **Celebrates the unique heritage of the region**

Questions

